

# WELCOME!



On behalf of Splash! Publications, we would like to welcome you to *Florida's Points of Interest*, one of eight lessons in our *Florida Geography Unit*. This lesson was designed by teachers with you and your students in mind. Of course, it is aligned with Florida's Geography Standards and Access Points for grades 3-7.

## THE FORMAT

Our goal is a lesson that you can use immediately. No comprehension questions to write, activities to create, or vocabulary words to define. Simply make copies of the lesson for your students and start teaching.

## THE VOCABULARY

Our lessons feature words in bold type. We have included a Glossary to help students pronounce and define the words. Unlike a dictionary, the definitions in the Glossary are concise and written in context. Remember, we're teachers! Students will be exposed to these vocabulary words in the comprehension activities. They will also be tested on the vocabulary words at the end of the lesson.

Students will be responsible for filling out and studying their vocabulary cards. You may want to have students bring in a small box for storing their vocabulary cards. We don't have to tell you that incorporating these words into your Reading and Spelling programs will save time and make the words more meaningful for students.

## THE LESSON PLAN

Before reading Florida's Points of Interest, students will:

- complete Vocabulary Cards for **artifacts**, **Caribbean**, **channel**, **Confederate**, **conflicts**, **defeated**, **ecosystem**, **kayaking**, **manatees**, **marine**, **migratory**, **pier**, **plantation**, **plateau**, **Protestants**, **sanctuary**, **souvenirs**, **stalactites**, **stalagmites**, **timber**, **World War II**.

After reading Florida's Points of Interest, students will:

- answer Florida's Points of Interest Reading Comprehension Questions.
- follow written directions to design a Florida Travel Brochure.
- create a map that is unique to the designed travel brochure.

**NOTE: You will need to make an additional copy of page 14 for students.**

- take a Vocabulary Quiz for Florida's Points of Interest.

## OUR OTHER FLORIDA GEOGRAPHY LESSONS

*The Northeast Region, the Middle West Region, the Southeast Region, the Southwest Region, the West Region, Florida's Regions, Florida's Water Resources.*

# VOCABULARY CARD



word: \_\_\_\_\_

definition: \_\_\_\_\_

\_\_\_\_\_



# VOCABULARY CARD



word: \_\_\_\_\_

definition: \_\_\_\_\_

\_\_\_\_\_



# VOCABULARY CARD



word: \_\_\_\_\_

definition: \_\_\_\_\_

\_\_\_\_\_





# POINTS OF INTEREST



Florida is full of beautiful sights and wonderful activities to keep our state's visitors and residents busy all year round. Florida offers deep sea fishing and water sports in both the Gulf of Mexico and the Atlantic Ocean. Camping, hiking, hunting, and boating can be enjoyed throughout Florida's national and state parks.

Sports fans enjoy watching their favorite minor or major league baseball, football, basketball, and hockey teams in many cities throughout Florida. Sports are so popular in Florida, the state has at least two teams for every professional sport.

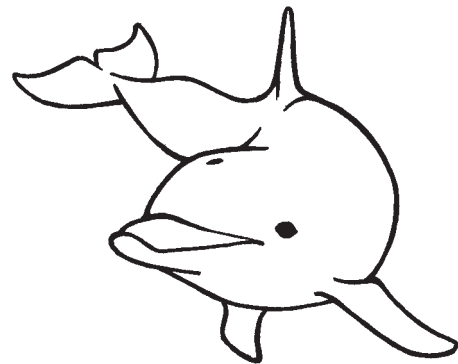
Of course, those who enjoy playing sports instead of watching them have several choices in Florida. The weather is so warm and beautiful in Florida that water skiing, rafting, **kayaking**, swimming, snorkeling, and scuba diving can be enjoyed throughout most of the year. Baseball, softball, soccer, golf, volleyball, tennis, and football are offered to people of all ages through Florida's city parks and recreation areas.

Florida is also full of fascinating places to visit. There are hundreds of state parks and more than one million acres of state forests in Florida. Florida also features national parks, preserves, seashores, and monuments. People from all over the world travel to Florida to enjoy the beautiful beaches and visit points of interest that include Walt Disney World, EPCOT Center, MGM and Universal studios, Cypress Gardens, and Kennedy Space Center.

Sneaking a peek at underwater sea creatures is easy in Florida. Sea World in Orlando, Marineland in St. Augustine, and the Seaquarium in Miami are centers for **marine** research as well as exciting amusement parks packed with hundreds of exhibits.

Tourists who visit Florida help the state's economy by spending money to stay in hotels, eat in restaurants, and shop for **souvenirs**. The fees paid to enter Florida's parks and monuments help keep these places beautiful so everyone can enjoy them.

Study the descriptions and maps of Florida's points of interest on the next few pages so you can help plan your next family vacation through the great state of Florida.



**BOTTLENOSE DOLPHIN**



## NATIONAL PARKS, PRESERVES, AND SEASHORES

**Big Cypress National Preserve**, located in southwest Florida, protects Big Cypress Swamp and provides fresh water to the Everglades and marine estuaries (ES•chew•air•ees) along Florida's southwest coast. Florida panthers, black bears, river otters, and American alligators are some of the animals living in their natural habitats within Big Cypress National Preserve.

**Biscayne Bay National Park**, located in southeast Florida, is almost entirely under water. The park is a great place for diving and protects a mangrove forest, the northernmost islands of the Florida Keys, and one of the world's largest coral reefs. Colorful fish, pelicans, **manatees**, and turtles are protected in their natural habitats. Some species of fish and plants found at Biscayne Bay National Park aren't found anywhere else in the world.

**Canaveral National Seashore** is located on a barrier island along the Atlantic Coast of Florida. The barrier island provides protection from tropical storms and hurricanes. Many threatened or endangered animals are protected at Canaveral National Seashore, including green sea turtles, bald eagles, Arctic peregrine falcons, manatees, right whales, and southeastern beach mice. Canaveral National Seashore's 24 miles of shoreline is the longest undeveloped beach on the east coast of Florida. Three species of sea turtles deposit 4,000 nests on the beach each year.

**Dry Tortugas National Park** is a cluster of seven islands located 70 miles west of Key West in the Gulf of Mexico. During the 1800s, the United States built Fort Jefferson to protect the shipping **channel** between the Gulf of Mexico, the western **Caribbean**, and the Atlantic Ocean. Hundreds of ships trying to make it through the channel got trapped in the coral reefs and sunk. In 1825, a lighthouse was built to warn ships of the dangerous reefs. Tortugas is the Spanish word for turtles. Visitors to the park can find loggerhead, green, hawksbill, and leatherback sea turtles playing in the water.

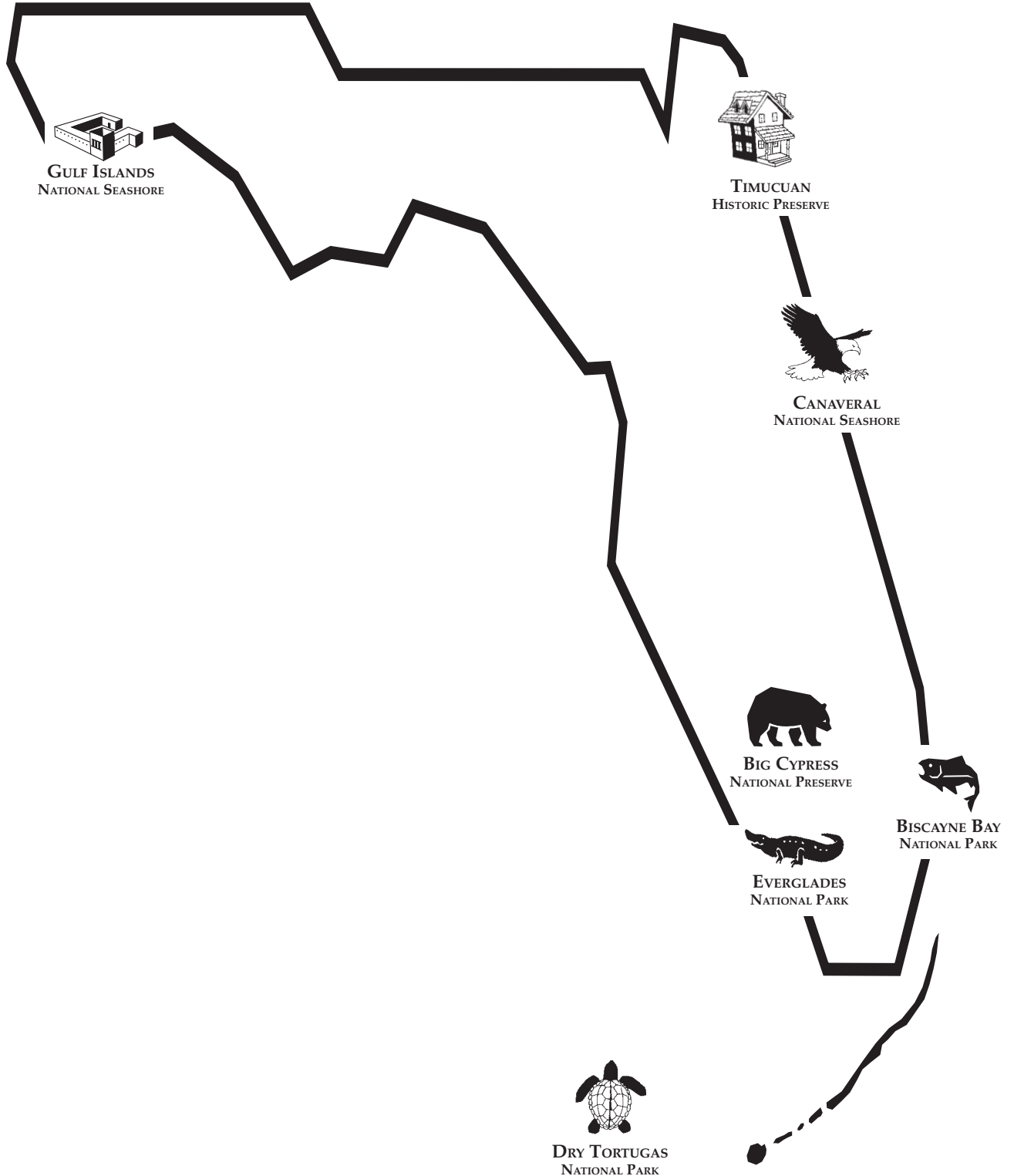
**Everglades National Park**, located in southwest Florida, protects just twenty percent of the Everglades **ecosystem**. The Everglades, known as the "River of Grass," is the largest single marsh system in the United States. Hundreds of plants and animals, including many threatened or endangered species, are protected in the park. The Everglades is the only place in the world where alligators and crocodiles live side by side.

**Gulf Islands National Seashore** stretches along the Gulf Coast from Mississippi to Florida. Millions of tourists each year visit America's largest national seashore. The Gulf Islands provide resting, feeding, and nesting areas for a variety of wildlife. It also preserves the history of the area's settlements from Spanish exploration through **World War II**. Fort Pickens was the largest of four forts built to defend Pensacola Bay. From 1829 to 1834, black slaves used more than 20 million bricks to build Fort Pickens. The fort was used during the Civil War and then served as a prison for famous Apache leader Geronimo and his band of Apache warriors.

**Timucuan** (tih•muh•COO•wuhn) **Historic Preserve** is located on the Atlantic Coast in northeast Florida. Within the preserve's 46,000 acres, visitors can explore one of the coast's last remaining undeveloped salt marshes. Fort Caroline preserves the history of the Timucua people who lived in the area before the arrival of French explorers in 1562. Kingsley **Plantation**, also within the preserve's boundaries, preserves the history of a cotton plantation where black slaves were used to plant and pick cotton. Kingsley Plantation features the oldest standing plantation house in Florida.



# NATIONAL PARKS, PRESERVES, AND SEASHORES





## HISTORIC PARKS, NATIONAL FORESTS, AND NATIONAL MONUMENTS

**Apalachicola National Forest**, located along the Gulf Coast in the panhandle of Florida, is our state's largest forest. Native Americans once hunted in the forests and fished in the nearby lakes, rivers, and streams. Camel Lake, Silver Lake, and Wright Lake are the three main recreation areas in the Apalachicola National Forest. Hiking and camping can be enjoyed throughout the nearly 600,000 acre forest.

**Castillo (cah•STEE•yoh) de San Marcos National Monument** is located in northeast Florida. In 1565, Spanish explorers arrived in the present-day city of St. Augustine and claimed the area for themselves. In 1672, the Spanish began building a fort out of coquina (coh•KEE•nuh), which is limestone formed from crushed shells. The Castillo took 23 years to complete. During the next 200 years, the fort was captured, attacked with cannons, renamed, used as a prison, but never destroyed. In 1924, Castillo de San Marcos, which is Spanish for Castle of St. Mark, became a national monument.

**Fort Matanzas (muh•TAN•zus) National Monument** is located along the Atlantic Coast in northeast Florida. Matanzas is the Spanish word for "slaughters." Fort Matanzas preserves the spot where 250 French **Protestants** were killed by Spanish soldiers, marking the beginning of Spanish control in Florida. Fort Matanzas guarded St. Augustine for hundreds of years. Today, Fort Matanzas National Monument protects the natural habitats of many plant and animal species.

**Ocala (oh•CAL•luh) National Forest** is located in central Florida between the St. Johns and Ocklawaha (ok•la•WA•ha) rivers. The forest covers more than 380,000 acres and is the southernmost forest in the continental United States. There are more than 600 lakes, rivers, and springs in Ocala National Forest. Juniper Springs, Salt Springs, Alexander Springs, and Silver Glen Springs are the most popular recreation areas in Ocala National Forest. Together, these springs pump more than 100 million gallons of water each day.

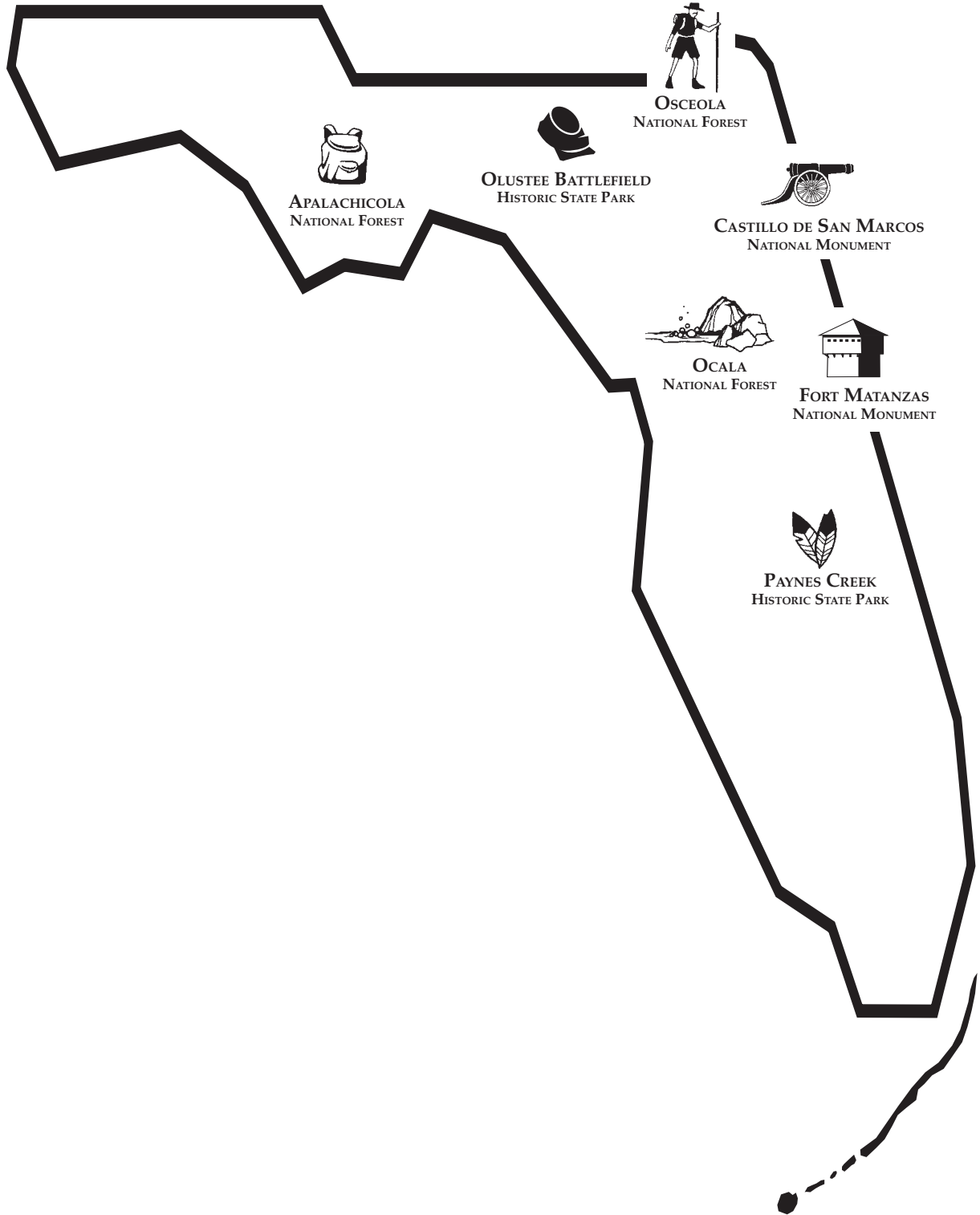
**Osceola (ah•see•OH•luh) National Forest**, located in northern Florida, is the smallest of Florida's three national forests. The forest surrounds Florida's most important Civil War battlefield at Olustee, and contains many historic sites dealing with the **timber** industry. Osceola National Forest is popular for hunting, camping along Ocean Pond, and hiking 20 miles of the Florida Trail.

**Olustee Battlefield Historic State Park**, located in northern Florida, preserves the site of Florida's largest Civil War battle. On February 20, 1864, more than 10,000 troops fought a five hour battle in a pine forest near Olustee. Almost 3,000 soldiers died during the battle, which resulted in a **Confederate** victory. The visitor's center features Civil War history and **artifacts**. Every February, actors put on their Civil War uniforms to reenact the famous Olustee Battle.

**Paynes Creek Historic State Park** is located in central Florida. During the 1840s, there were many **conflicts** between Florida's settlers and members of the Seminole (SEM•uh•nol) tribe. In 1849, the United States Army built the first of several trading posts to keep the Native Americans away from the white settlers. The Seminoles never attacked the fort, but the Army was nearly **defeated** by mosquitoes. Today, Fort Chokonikla (choh•koh•NEE•kluh) and the Kennedy-Darling Trading Post can be viewed from an overlook on Payne Creek.



# HISTORIC PARKS, NATIONAL FORESTS, AND NATIONAL MONUMENTS





## STATE PARKS

**Amelia Island State Park**, located in northeast Florida, is a perfect place to search for seashells, go bird watching, or just enjoy 200 acres of unspoiled wilderness. Amelia Island State Park is the only state park in Florida that offers horseback riding right on the beach. Most people who visit Amelia Island State Park come for the fishing. Surf fishing along the shoreline or fishing from the George Cady Bridge Fishing **Pier** are favorite activities at Amelia Island State Park.

**Bahia (buh • HEE • uh) Honda State Park**, located in Big Pine Key, is one of Florida's southernmost state parks. Bahia Honda is known for its beautiful beaches, sea breezes, and excellent snorkeling. Twice each day, snorkelers can board a boat to the Florida Keys National Marine **Sanctuary** and explore Looe Key Reef. Lobsters, starfish, sea biscuits, and colorful tropical fish can be spotted while snorkeling the reef.

**Bald Point State Park** is located in northern Florida along the Gulf Coast. Every fall, hundreds of bald eagles, monarch butterflies, and other **migratory** birds can be seen at the park as they head south for the winter. The birds and butterflies stop at the park to eat and drink before making the long flight across the Gulf of Mexico to their winter homes in Central and South America. Swimming, fishing, canoeing, and kayaking can be enjoyed in Apalachee Bay.

**Charlotte Harbor State Park**, located in southwest Florida, stretches across 42,000 acres and preserves more than 80 miles of the Charlotte Harbor shoreline. Several hiking trails allow visitors to see fresh and salt water marshes, as well as mangrove forests. It is not unusual to see manatees, dolphins, and other wildlife playing in the Charlotte Harbor.

**Florida Caverns State Park**, located in northwest Florida, is Florida's only state park to offer public cave tours. During the cave tours, visitors learn what happens when water sits on top of limestone. As the calcium in the limestone dissolves, the water drips and forms **stalactites**. The stalactites continue to drip the calcium-filled water onto the cavern's floor, forming **stalagmites**. Many of the caves at Florida Caverns State Park are home to blind salamanders, crayfish, and endangered gray bats.

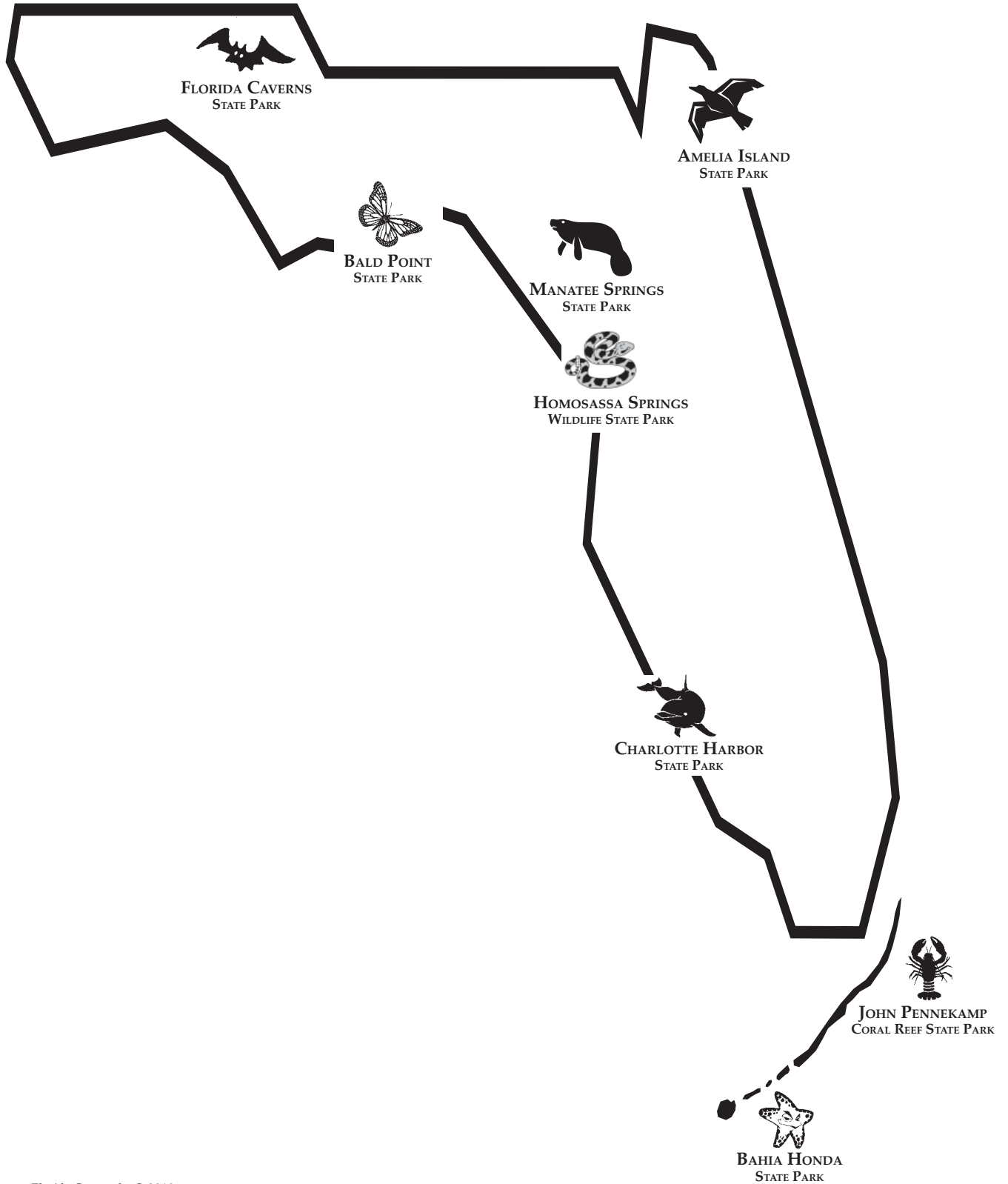
**Homosassa (HOH • moh • sah • suh) Springs Wildlife State Park** is located along the Gulf Coast in west Florida. The park showcases Florida's native wildlife, including black bears, bobcats, white-tailed deer, American crocodiles, American alligators, and river otters. Visitors can see manatees in their natural underwater habitats. The Reptile House provides close-up views of snakes and the Children's Education Center features hands-on activities.

**John Pennekamp Coral Reef State Park**, located in Key Largo, was the first underwater park in the United States. The 75 square mile preserve was created in 1960, to protect the area's coral reef with its sponges, lobsters, sea horses, and marine life from being destroyed. The park was named after John D. Pennekamp, the man responsible for organizing a huge group of conservationists who worked to protect the only hard coral reef formation in North America.

**Manatee Springs State Park**, located along the Gulf Coast in west Florida, releases about 100 million gallons of water every day. From November through April, manatees have the warm waters all to themselves. During the rest of the year, visitors to Manatee Springs State Park may swim, scuba dive, and snorkel in the spring's crystal clear waters. Hiking, camping, and fishing are also available at Manatee Springs State Park.



# STATE PARKS





## OTHER ATTRACTIONS AND EVENTS

**Daytona International Speedway**, located along the Atlantic Coast, is known as the world center of racing. The speedway hosts many races, including the annual Daytona 500 race. Visitors can tour the racetrack, watch videos of early races, and get an up-close view of stock cars and other racing artifacts.

**John and Mabel Ringling Museum of Art**, located in southwest Florida, is the official state art museum of Florida. John Ringling and his four brothers turned their musical act into a circus. In 1907, the Ringling brothers bought another circus and formed the Ringling Brothers and Barnum & Bailey Circus. It became known as the Greatest Show on Earth. The John and Mabel Ringling Museum of Art features the Ringling art collection. The nearby Circus Museum traces the history of the famous circus with parade wagons, costumes, posters, pictures, and other circus items.

**John F. Kennedy Space Center**, located along the Atlantic Coast of Florida, is the launching site for America's space flights. Between 1950 and 1999, more than 3,000 missiles, rockets, and spaceships carrying crews were launched from Kennedy Space Center. The visitor center features a moon rock, space vehicles, and important information about the history of our nation's space program. Visitors can also take a bus tour to view the space shuttle launchpads.

**Miami Metrozoo**, located in southeast Florida, is a zoo without cages. More than 2,000 animals representing 400 different species from all over the world roam free in their natural habitats. Tours and exhibits focus on education and conserving the world's wildlife for the future.

**Sanibel Island**, located along the Gulf Coast in southwest Florida, is a shell collector's paradise. With more than 250 types of shells, it's no surprise that Sanibel is known as the Shell Capital of the World. Sanibel is part of a large **plateau** (pla•TOE) that stretches out for miles into the Gulf of Mexico. Seashells gather on the plateau's shelf and the waves wash the shells onto Sanibel's 15 beaches.

**The Florida Museum of Natural History** is located in northern Florida on the University of Florida campus. A butterfly rainforest, dinosaur fossils, Florida's Native American history, underwater displays, and more than 28 million plant and animal species are featured at the largest natural history museum in the Southeast.

**The Florida Seafood Festival**, held in Apalachicola (ap•uh•lach•uh•KOH•luh) every November, is Florida's oldest and largest seafood festival. Thousands come to participate in the festival's oyster eating and shucking contests, blue crab races, and seafood cooking contests.

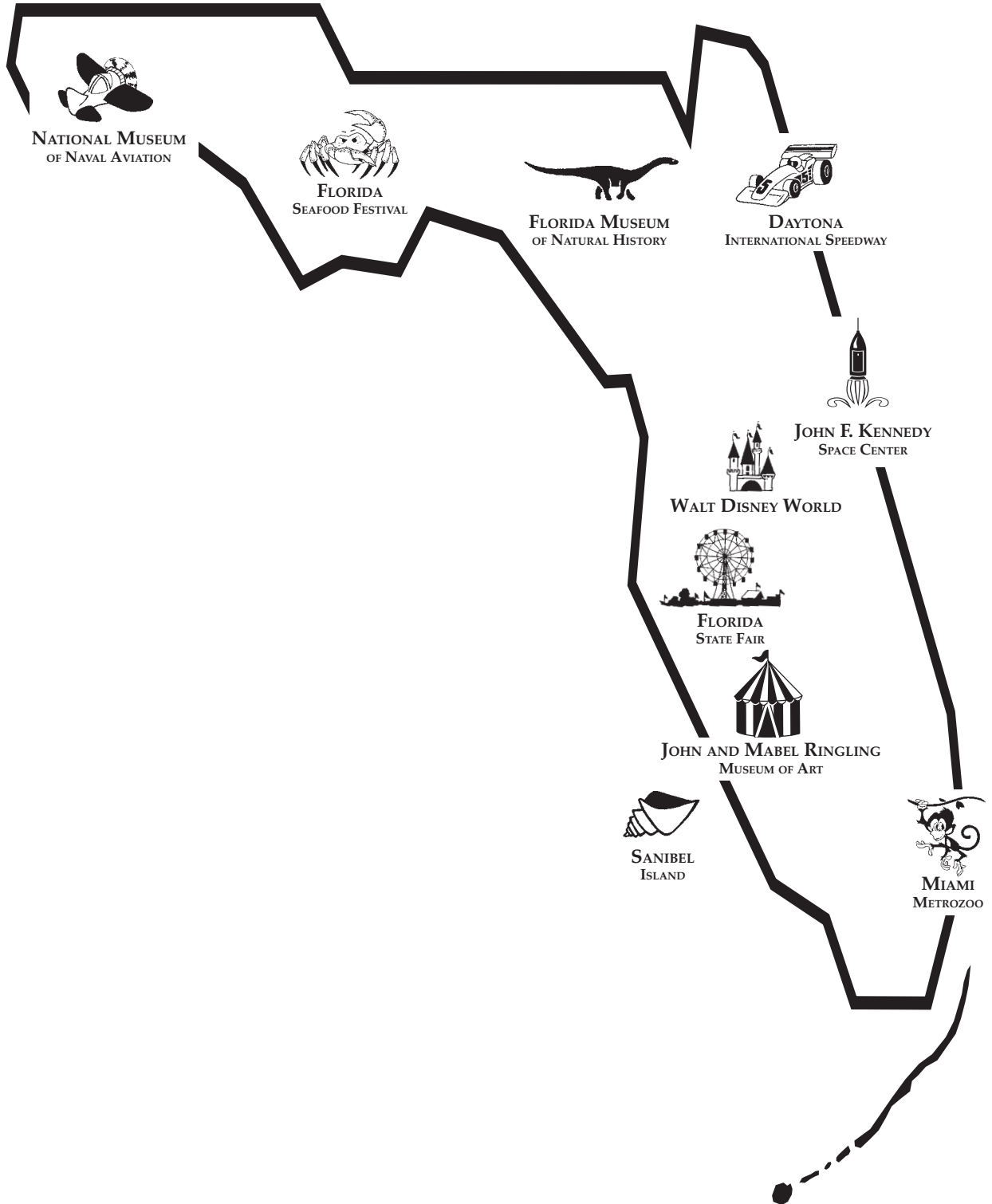
**The Florida State Fair** is held every February in the city of Tampa. For more than 100 years, the state fair has featured arts, crafts, and farm animal contests, shows, music, carnival rides, exhibits, and every kind of food that can be fried on a stick.

**The National Museum of Naval Aviation** is located in the far northwest corner of Florida's panhandle. The museum focuses on the history of naval flight and features navy fighter planes, models of aircraft carriers, and early blimps. Visitors are invited to take the controls of navy training equipment.

**Walt Disney World** is located in central Florida. Four major theme parks include the Magic Kingdom, EPCOT Center, Disney-MGM Studios, and Disney's Animal Kingdom. Two water parks and a number of other attractions are located within the boundaries of Walt Disney World.



# OTHER ATTRACTIONS AND EVENTS



 **POINTS OF INTEREST** 

**Directions:** Read each question carefully. Darken the circle for the correct answer.

- |   |  |
|---|--|
| <p><b>1</b> After reading the first paragraph of Florida’s Points of Interest, you get the idea that –</p> <p>A there is very little to do in Florida<br/>         B Florida borders the Pacific Ocean<br/>         C there are no state parks in Florida<br/>         D Florida offers activities for all ages and interests</p> <p><b>2</b> All of the following are points of interest in Florida <u>except</u> –</p> <p>F Walt Disney World<br/>         G MGM Studios<br/>         H the Grand Canyon<br/>         J Sea World</p> <p><b>3</b> The three national parks in Florida are –</p> <p>A Canaveral, Big Cypress, and Walt Disney World national parks<br/>         B EPCOT, Gulf Islands, and Dry Tortugas national parks<br/>         C Big Cypress, Sea World, and Everglades national parks<br/>         D Biscayne Bay, Dry Tortugas, and Everglades national parks</p> <p><b>4</b> What can you learn by studying the map of Florida’s national parks, preserves, and seashores?</p> <p>F Big Cypress National Preserve is located south of Dry Tortugas National Park.<br/>         G Gulf Islands National Seashore is located east of Canaveral National Seashore.<br/>         H Biscayne Bay National Park is located south of Canaveral National Seashore.<br/>         J Everglades National Park is located north of Timucuan Historic Preserve.</p> | <p><b>5</b> After looking at the map of Florida’s historic parks, national forests, and national monuments, you can tell that Ocala National Forest is –</p> <p>A northwest of Paynes Creek Historic State Park<br/>         B south of Fort Matanzas National Monument<br/>         C west of Apalachicola National Forest<br/>         D northeast of Olustee Battlefield Historic State Park</p> <p><b>6</b> Which statement about Castillo de San Marcos National Monument is <u>true</u>?</p> <p>F It is located along the Gulf Coast.<br/>         G It took less than a year to build.<br/>         H At one time, it was used as a prison.<br/>         J In 1680, the fort was completely destroyed.</p> <p><b>7</b> Which of Florida’s state parks is home to endangered gray bats?</p> <p>A Amelia Island State Park<br/>         B Florida Caverns State Park<br/>         C Manatee Springs State Park<br/>         D Bald Point State Park</p> <p><b>8</b> According to the map of Florida’s other attractions and events, the Florida Museum of Natural History is southeast of –</p> <p>F Walt Disney World<br/>         G the National Museum of Aviation<br/>         H Sanibel Island<br/>         J John F. Kennedy Space Center</p> |
|---|--|

READING

**Answers**

- |                   |                   |
|-------------------|-------------------|
| 1 (A) (B) (C) (D) | 5 (A) (B) (C) (D) |
| 2 (F) (G) (H) (J) | 6 (F) (G) (H) (J) |
| 3 (A) (B) (C) (D) | 7 (A) (B) (C) (D) |
| 4 (F) (G) (H) (J) | 8 (F) (G) (H) (J) |

# FLORIDA TRAVEL BROCHURE

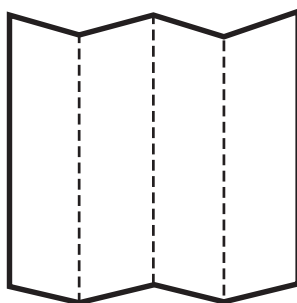
By now you can see that Florida is a great place to live and visit because of all the wonderful things there are to do in this state. In this activity, you will help someone plan a vacation by making a travel brochure that describes and pictures some of Florida's points of interest.

## PART I DIRECTIONS:

1. Decide which of Florida's points of interest you want to use for your brochure. You must use **four** of Florida's national parks, preserves, or seashores; **three** historic parks, national forests, or national monuments; **three** state parks; **four** of Florida's other attractions and events.
2. Cut out the pictures and color them with your coloring pencils. (If you are artistic, you may also draw your own pictures.)
3. Write a description of each of the points of interest you've chosen. You may copy the outline below on separate paper to make it easier for you. Remember to write your descriptions in your own words.

DESCRIPTION OUTLINE	
The	<u>(Point of Interest)</u> is located in the _____ region of Florida.
If you visit	<u>(Point of Interest)</u> you will learn _____.
An interesting fact about	<u>(Point of Interest)</u> is _____.
	_____.

4. Fold a piece of white 11 x 17 inch construction paper accordion-style so it looks like this:



5. Decorate the front cover. On the inside of the brochure you will title the top of each section with the points of interest that will appear in that section.
6. Glue in or draw the pictures of the points of interests you've chosen. Beside each picture, copy the description you've written about each point of interest.

**NATIONAL PARKS, PRESERVES,  
AND SEASHORES**



**HISTORIC PARKS, NATIONAL FORESTS,  
AND NATIONAL MONUMENTS**



**STATE PARKS**



**OTHER ATTRACTIONS AND EVENTS**



# FLORIDA TRAVEL BROCHURE



## PART II

**DIRECTIONS:** In Part II, you will create a map for your Florida brochure. Using a new set of pictures, color, cut, and glue only the points of interests featured in your brochure into their proper places on the blank Florida map below.





12. \_\_\_\_\_ conflicts

13. \_\_\_\_\_ defeated

14. \_\_\_\_\_ ecosystem

15. \_\_\_\_\_ kayaking

16. \_\_\_\_\_ manatees

17. \_\_\_\_\_ plateau

18. \_\_\_\_\_ marine

19. \_\_\_\_\_ plantation

20. \_\_\_\_\_ migratory

21. \_\_\_\_\_ pier



J. a platform built over water.

K. the type of nation formed by the Southern states during the Civil War; this nation fought to continue slavery.

L. struggles or disagreements.

M. tokens of remembrance.

N. a group of living things and the environment in which they live.

O. icicle-shaped deposits of dripping calcium that hang from the roof of a cave.

P. won victory over.

Q. a sheltered area where birds and other animals are protected from being hunted or harmed.

R. a war fought from 1939 to 1945 when Germany, Italy, and Japan unsuccessfully battled against the United States, France, and Great Britain.

S. types of animals and birds that move from one region or country to another.

T. traveling through water in a boat that looks like a canoe.

U. icicle-shaped deposits of calcium that build up from the floor of a cave.

# GLOSSARY



**ar•ti•facts** objects and tools used by early humans for eating, cooking, and hunting.

**Ca•rib•be•an** an arm of the Atlantic Ocean surrounded on the north and east by the West Indies, on the south by South America, and on the west by Central America.

**chan•nel** long, narrow, deep part of a body of water.

**Con•fed•er•ate** the type of nation formed by the Southern states during the Civil War; this nation fought to continue slavery.

**con•flicts** struggles or disagreements.

**de•feat•ed** won victory over.

**ec•o•sys•tem** a group of living things and the environment in which they live.

**kay•ak•ing** traveling through water in a boat that looks like a canoe.

**man•a•tees** endangered plant-eating mammals with two flippers for swimming and a large spoon-shaped tail.

**ma•rine** animal species that live in the sea.

**mi•gra•tor•y** types of animals and birds that move from one region or country to another.

**pier** a platform built over water.

**plan•ta•tion** very large farm in the South where crops of cotton and tobacco were grown and slave labor was generally used.

**pla•teau** a large, high plain.

**Prot•es•tants** members of a Christian church other than the Roman Catholic Church.

**sanc•tu•ar•y** a sheltered area where birds and other animals are protected from being hunted or harmed.

**sou•ve•nirs** tokens of remembrance.

**sta•lac•tites** icicle-shaped deposits of dripping calcium that hang from the roof of a cave.

**sta•lag•mites** icicle-shaped deposits of calcium that build up from the floor of a cave.

**tim•ber** wood from trees that can be used for building.

**World War II** a war fought from 1939 to 1945 when Germany, Italy, and Japan unsuccessfully battled against the United States, France, and Great Britain.

# ANSWERS



## ANSWERS TO COMPREHENSION QUESTIONS

1. D
2. H
3. D
4. H
5. A
6. H
7. B
8. G

## ANSWERS TO VOCABULARY QUIZ

- |       |       |
|-------|-------|
| 1. E  | 11. H |
| 2. I  | 12. L |
| 3. F  | 13. P |
| 4. U  | 14. N |
| 5. G  | 15. T |
| 6. R  | 16. B |
| 7. K  | 17. D |
| 8. M  | 18. C |
| 9. Q  | 19. A |
| 10. O | 20. S |
|       | 21. J |

## FLORIDA BROCHURE AND MAP GRADING CHART

CRITERIA	POINTS POSSIBLE	POINTS EARNED
Placing/Describing 14 Points of Interest	<b>56 (4 points each)</b>	
Spelling/Grammar	<b>10</b>	
Use of Color/Cover Design	<b>10</b>	
Brochure Map correctly placing 14 pictures, neatness of map	<b>24</b>	
<b>TOTAL</b>	<b>100</b>	