

WELCOME!



On behalf of Splash! Publications, we would like to welcome you to *California's Regions*, one of eight lessons in our *California Geography Unit*. This lesson was designed by teachers with you and your students in mind.

THE FORMAT

Our goal is a lesson that you can use immediately. No comprehension questions to write, activities to create, or vocabulary words to define. Simply make copies of the lesson for your students and start teaching.

THE VOCABULARY

Our lessons feature words in bold type. We have included a Glossary to help students pronounce and define the words. Unlike a dictionary, the definitions in the Glossary are concise and written in context. Remember, we're teachers! Students will be exposed to these vocabulary words in the comprehension activities. They will also be tested on the vocabulary words at the end of the lesson.

Students will be responsible for filling out and studying their vocabulary cards. You may want to have students bring in a small box for storing their vocabulary cards. We don't have to tell you that incorporating these words into your Reading and Spelling programs will save time and make the words more meaningful for students.

THE LESSON PLAN

Before reading *California's Regions*, students will:

- complete Vocabulary Cards for ***aqueducts, canals, capital, climate, coast, current, economy, elevations, extends, fertile, fossils, glaciers, humid, irrigation, livestock, manufacturing, mineral, North America, peaks, pesticides, plateau, precipitation, preserve, region, sagebrush, sediment, tourism, unique, wetlands, yucca.***

After reading *California's Regions*, students will:

- answer *California's Regions* Reading Comprehension Questions.
- make a map of California's four regions.
- identify and describe each of California's four regions.
- take a Vocabulary Quiz for California's regions.

NOTE: The answers to all activities and quizzes are at the end of the lesson.

OUR OTHER CALIFORNIA GEOGRAPHY LESSONS

The Northeast Region, the Middle West Region, the Southeast Region, the Southwest Region, the West Region, California's Water Resources, California's Points of Interest.

VOCABULARY CARD



word: _____

definition: _____



VOCABULARY CARD



word: _____

definition: _____



VOCABULARY CARD



word: _____

definition: _____





CALIFORNIA'S REGIONS

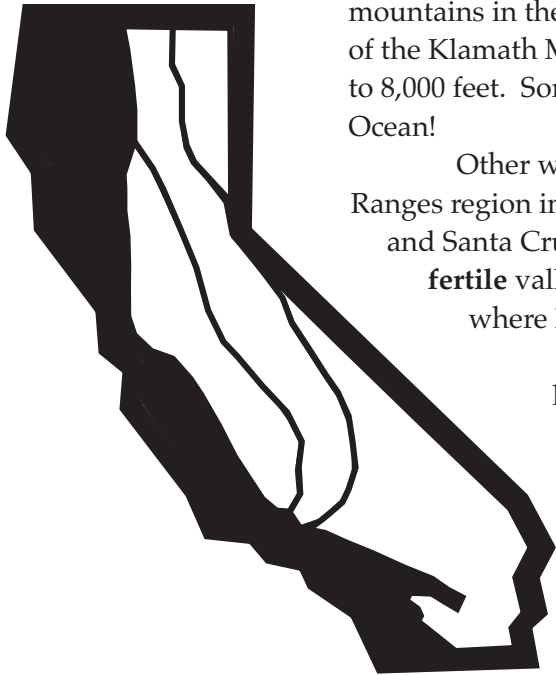


California, the third largest state, is one of five Pacific states located in the West region of the United States. You have already read that Alaska, Hawaii, Oregon, and Washington are the other Pacific states in the West region. Remember, most of the Pacific states feature high mountains and low valleys.

Like the rest of the United States, California is divided into regions. California's four major land regions include the **Coast Ranges**, the Inland Mountains, the Central Valley, and the Basin and Range. You will soon learn that each region has its own special characteristics, making it an important piece of the great state of California.

THE COAST RANGES REGION

The Coast Ranges region extends for 4,500 miles along the Pacific Coast of **North America**. California's Coast Ranges region is actually part of a larger chain of mountains that stretch from Alaska to California, and into Mexico. Most of the mountains in the Coast Ranges region are low hills, but some **peaks** of the Klamath Mountains in the northern part of this region rise up to 8,000 feet. Some of these mountain ranges lie beneath the Pacific Ocean!



Other well known mountain ranges in California's Coast Ranges region include the Santa Lucia (loo•CHEE•uh), Diablo, and Santa Cruz ranges. Separating these mountain ranges are **fertile** valleys for growing crops and grass covered areas where **livestock** is raised.

Mendocino, Sonoma, and Napa counties are known as Wine Country because the **climate** in this part of the Coast Ranges region is perfect for growing grapes used to make wine.

California's famous redwood trees grow in the coastal areas of the Coast Ranges region. **Manufacturing, tourism,** and dairy products are also important to the **economy** of the Coast Ranges region. In addition, the Coast Ranges region is very rich in oil and **mineral** deposits.

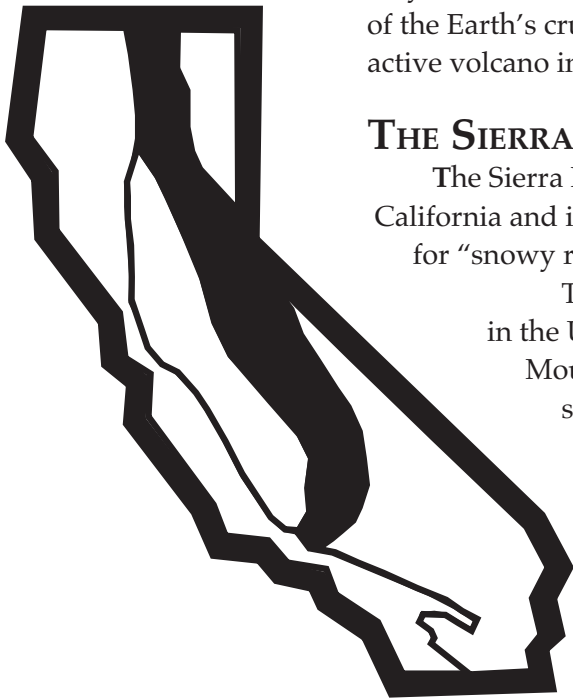
The climate in the northern part of the Coast Ranges region is cool and wet. The San Francisco area is famous for its fog, which rolls in from the Pacific Ocean when the warm, wet ocean breezes hit the cool coastal **current**. The southern portion of the Coast Ranges region enjoys a climate that is warm and sunny almost all year long.

THE SAN ANDREAS (AN•DRAY•US) FAULT

An important feature of the Coast Ranges region is the San Andreas (an•DRAY•us) Fault. It is the longest fault in California, stretching from the northern part of the state to the country of Mexico. A fault is a break in the Earth's rocky outer shell. Below this outer shell are giant slabs of rock called plates. Movement along a fault line causes the plates to grind against each other. When the plates rub against each other, pieces of the plates break loose. Too much movement along a fault causes earthquakes.

THE INLAND MOUNTAINS REGION

Like the Coast Ranges region, the Inland Mountains region also runs north and south through California. The Cascade Mountains and the Sierra Nevada Mountains are the two major mountain ranges in the Inland Mountains region. The Cascade Mountains are **unique** because they were formed millions of years ago by volcanoes. Lava oozed out of the Earth's crust and hardened into mountains. Lassen Peak is an active volcano in the southern Cascade Mountains.



THE SIERRA NEVADA

The Sierra Nevada Mountain Range stretches 400 miles across California and into a small part of Nevada. Sierra Nevada is Spanish for "snowy range."

The Sierra Nevada is home to some of the highest peaks in the United States, including Mount Whitney. At 14,495 feet, Mount Whitney is the highest point in the United States south of Alaska.

Kings Canyon, Yosemite (yo•SEH•meh•tee), and Sequoia (seh•KOY•yuh) national parks cover almost 2,500 square miles of the Inland Mountains region. Together, these national parks **preserve** part of the Sierra Nevada Mountain Range.

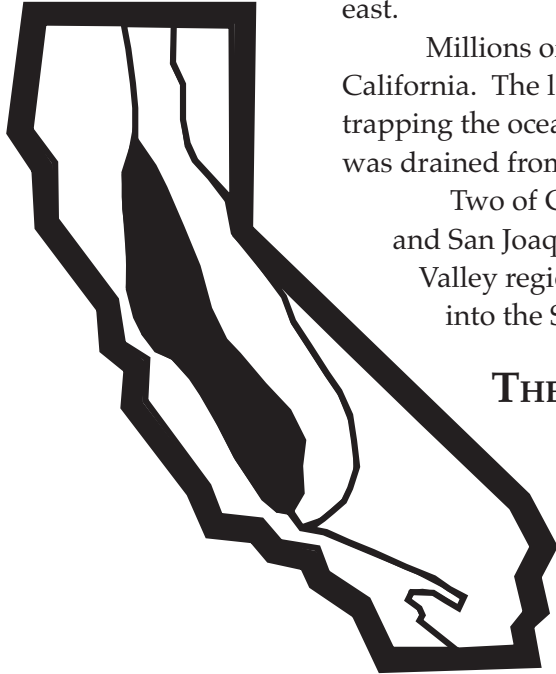
CALIFORNIA'S GLACIERS (GLAY•SHERZ)

Millions of years ago, huge **glaciers** moved across the high mountains of the Sierra Nevada and carved deep canyons. When the glaciers melted, hundreds of streams and lakes were created, including Lake Tahoe.

The Inland Mountains region has a climate that includes warm summers and cool, rainy winters. In the higher **elevations** of the Inland Mountains region, the peaks of the mountains are covered with snow all winter long.

THE CENTRAL VALLEY REGION

California's Central Valley region is one of the richest, most fertile farmland areas in the world. Sometimes called the Great Valley, the Central Valley region lies between the Coast Ranges region on the west and the Inland Mountains region on the east.



Millions of years ago, the Pacific Ocean covered this part of California. The land sank when mountains rose around the water, trapping the ocean's water in the valley. During the 1800s, the water was drained from the valley so the land could be used for farming.

Two of California's most important rivers, the Sacramento and San Joaquin (wah•KEEN) rivers, flow through the Central Valley region. These rivers divide the Central Valley region into the Sacramento Valley and the San Joaquin Valley.

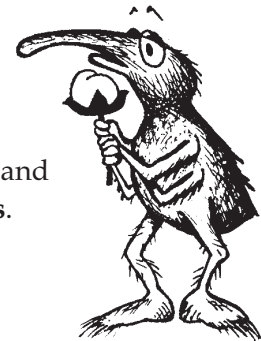
THE ECONOMY OF THE CENTRAL VALLEY

The rich soil in the Central Valley region is made of **sediment** that's been washing down from the mountains for thousands of years. In the Sacramento Valley, trees are grown for lumber and rice is grown in the **wetlands**.

Farther south, in the San Joaquin Valley, fruits, nuts, citrus, and cotton are grown.

Farmers in the Central Valley region depend upon **irrigation** from **canals** and **aqueducts** (AH•kwuh•ducts) to supply water to their farms.

In the summer, the climate of the Central Valley region is hot and dry. In the winter, the temperatures are cooler and the air becomes **humid**. Major cities in the Central Valley region include California's **capital** city of Sacramento, as well as the cities of Stockton, Fresno, and Bakersfield.



BOLL WEEVIL

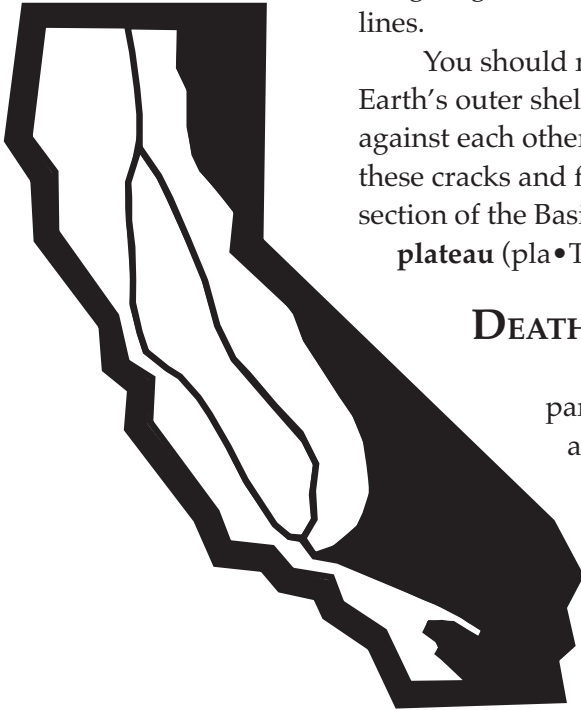
FAST FACTS



- California's Central Valley region stretches for 400 miles and supplies about one quarter of the food that Americans eat.
- Farmers are under pressure to reduce the amount of **pesticides** they use to kill bugs, like the harmful boll weevil, on more than 300 different types of crops grown in the Central Valley region.
- The boll weevil uses its long, curved snout to drill into the center of the cotton plant and eat the cotton boll. The cotton boll contains the important seeds and fibers used to make oil, paper, furniture, and clothes.

THE BASIN AND RANGE REGION

California's Basin and Range region, also known as the Great Basin, is part of a larger region that **extends** into Nevada, Oregon, and several other states. In California, the Basin and Range region lies east of the Inland Mountains region along fault lines.



You should remember that a fault line is a break in the Earth's outer shell where sections of the Earth's crust rub up against each other. Thousands of years ago, lava flowed from these cracks and flooded the area. As a result, the northern section of the Basin and Range region is made up of a lava **plateau** (pla•TOE) known as the Modoc Plateau.

DEATH VALLEY

Deserts cover most of the land in the southern part of the Basin and Range region. Deserts are hot and dry areas of land that receive little rainfall.

Death Valley, the hottest, driest desert in California, and the lowest point in the United States, is located in the Basin and Range region. Some of the nation's highest temperatures have been recorded in Death Valley. It is not unusual for temperatures to rise above 100° Fahrenheit during the day in Death Valley.

Even though it is hot, many different types of plants and wildlife live in Death Valley. **Yucca**, cactus, **sagebrush**, wildflowers, and mesquite (meh•SKEET) grow well in Death Valley's dry, sandy soil. These plants are able to soak up water during rare rainfalls and store it for months or even years. Foxes, coyotes, roadrunners, snakes, and lizards are also able to survive in Death Valley's hot temperatures.

The Mojave (mo•HA•vee) Desert covers a large area of land between the southern Sierra Nevada and the Colorado River. The Colorado Desert lies to the south. Less than five inches of **precipitation** falls in this part of the Basin and Range region each year. Farmers use irrigation canals to bring water to their crops of cotton, citrus, and flowers.



YUCCA

FAST FACTS



- Sand dunes appear throughout the Mojave Desert. Sand dunes are mounds of loose sand grains that are tossed around by the wind.
- Owens Valley is a desert area that lies in the eastern section of the Basin and Range region. Scientists have found **fossils** of sea creatures that prove Owens Valley was once completely covered with water.



CALIFORNIA'S REGIONS

Directions: Read each question carefully. Darken the circle for the correct answer.

- | | |
|---|--|
| <p>1 California is part of which region of the United States?</p> <p>A West</p> <p>B Southeast</p> <p>C Southwest</p> <p>D Great Plains</p> <p>2 California is divided into which four land regions?</p> <p>F The Desert, Mountains, Rivers, and Basin.</p> <p>G The Great Plains, Rocky Mountains, California Plateau, and Great Valley.</p> <p>H The Coast Ranges, Inland Mountains, Central Valley, and Basin and Range.</p> <p>J The Northern, Southern, Eastern, and Central.</p> <p>3 After reading about the mountains in the Coast Ranges region, you learn that –</p> <p>A they are not very tall</p> <p>B they are only found in California</p> <p>C they are not really part of the Coast Ranges region</p> <p>D some of the mountain ranges lie beneath the Pacific Ocean</p> <p>4 According to the information about the San Andreas Fault, what causes earthquakes?</p> <p>F Very cold weather.</p> <p>G Fog that rolls in from the Pacific Ocean.</p> <p>H Too much movement along a fault line.</p> <p>J Too many people standing along a fault line.</p> | <p>5 All of these things about the Inland Mountains region are true <u>except</u> –</p> <p>A the Inland Mountains region runs north and south through California</p> <p>B the Cascade and Sierra Nevada mountains are found in the Inland Mountains region</p> <p>C the climate of the Inland Mountains region is hot and dry</p> <p>D Kings Canyon, Yosemite, and Sequoia national parks are located in the Inland Mountains region</p> <p>6 What type of climate is found in California's Central Valley region?</p> <p>F Hot and dry in the summer; cool and wet in the winter.</p> <p>G Cool and dry in the summer; warm and wet in the winter.</p> <p>H Cool and wet in the summer; warm and dry in the winter.</p> <p>J Warm and wet in the summer; cool and dry in the winter.</p> <p>7 The northern section of the Basin and Range region is made up of a lava <u>plateau</u>. A <u>plateau</u> is –</p> <p>A a large, high plain</p> <p>B a low area</p> <p>C a volcano</p> <p>D a deep canyon</p> |
|---|--|

READING

Answers

- | | |
|--------------------------|--------------------------|
| 1 (A) (B) (C) (D) | 5 (A) (B) (C) (D) |
| 2 (F) (G) (H) (J) | 6 (F) (G) (H) (J) |
| 3 (A) (B) (C) (D) | 7 (A) (B) (C) (D) |
| 4 (F) (G) (H) (J) | |

MAPPING: CALIFORNIA'S REGIONS



In this activity, you will label California's four regions and list two interesting facts about each region.

PART I

- Directions:**
1. On the map below, draw in the boundaries for California's Coast Ranges, Inland Mountains, Central Valley, and Basin and Range regions.
 2. Label each region. Spelling counts!
 3. Use a different coloring pencil to lightly color in each region.



MAPPING: CALIFORNIA'S REGIONS

PART II

Directions: Use the information from California's Regions to name each of the four regions pictured below. Then use the lines provided to list two interesting facts about each region. Remember to write your facts using complete sentences. Use the back of this paper if you need more room.

1.



Name of Region: _____

Two interesting facts: _____

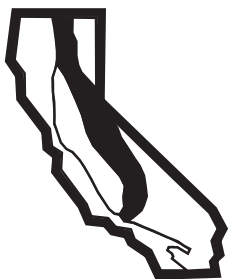
2.



Name of Region: _____

Two interesting facts: _____

3.



Name of Region: _____

Two interesting facts: _____

4.



Name of Region: _____

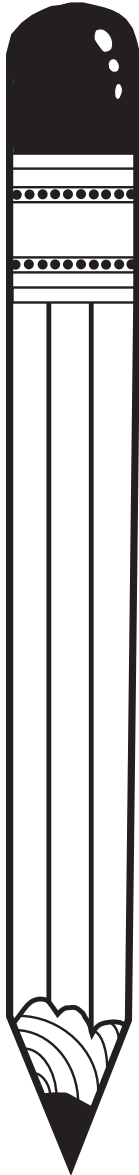
Two interesting facts: _____

VOCABULARY QUIZ

CALIFORNIA'S REGIONS

Directions: Match the vocabulary word on the left with its definition on the right. Put the letter for the definition on the blank next to the vocabulary word it matches. Use each word and definition only once.

1. _____ wetlands
2. _____ aqueducts
3. _____ climate
4. _____ yucca
5. _____ canals
6. _____ current
7. _____ capital
8. _____ elevations
9. _____ irrigation
10. _____ extends
11. _____ peaks
12. _____ fertile
13. _____ coast



- A. a plant with sword-shaped leaves and clusters of white waxy flowers that grows in the warmer regions of America.
- B. large sheets of ice moving slowly down a valley or spreading across the surface of the land.
- C. material that settles to the bottom.
- D. the city that serves as the center of government for the state or nation.
- E. a large, high plain.
- F. the deposit of rain, hail, snow, sleet, or mist on the Earth.
- G. lands containing a lot of soil moisture.
- H. stretches.
- I. protect from injury or ruin so more can be learned.
- J. animals raised on a farm to eat or sell for profit.
- K. area of land with physical features and characteristics that sets it apart from other areas of land.
- L. the business of providing services for people who are on vacation.
- M. an American plant that grows as a low shrub and has a bitter juice and a sharp smell.
- N. special; one of a kind.

14. _____ economy

15. _____ unique

16. _____ sediment

17. _____ North America

18. _____ humid

19. _____ livestock

20. _____ manufacturing

21. _____ fossils

22. _____ mineral

23. _____ glaciers

24. _____ precipitation

25. _____ preserve

26. _____ region

27. _____ sagebrush

28. _____ tourism

29. _____ pesticides

30. _____ plateau



O. pointed tops of mountains.

P. pipes that take water from one place to another.

Q. a quickly moving body of water.

R. the average condition of weather over a period of years.

S. a word used to describe the way a city, town, state, or country makes money.

T. man-made waterways for boats or for watering crops.

U. wet or moist air.

V. one of seven continents in the world. Bounded by Alaska on the northwest, Greenland on the northeast, Florida on the southeast, and Mexico on the southwest.

W. an area of land that borders water.

X. the heights to which things are raised.

Y. the remains of plants or animals preserved in earth or rock.

Z. making something from raw materials by hand or machinery.

AA. rich soil that produces a large number of crops.

BB. substance found below ground that is useful to humans, including ore, coal, natural gas, water, and gems.

CC. watering crops by digging a ditch that leads from a body of water to a farm.

DD. chemicals used to kill pests, especially insects.

GLOSSARY



aq•ue•ducts pipes that take water from one place to another.

ca•nals man-made waterways for boats or for watering crops.

cap•i•tal the city that serves as the center of government for the state or nation.

cli•mate the average condition of weather over a period of years.

coast an area of land that borders water.

cur•rent a quickly moving body of water.

e•con•o•my a word used to describe the way a city, town, state, or country makes money.

el•e•va•tions the height to which something is raised.

ex•tends stretches.

fer•tile rich soil that produces a large number of crops.

fos•sils the remains of plants or animals preserved in earth or rock.

gla•ciers large sheets of ice moving slowly down a valley or spreading across the surface of the land.

hu•mid wet or moist air.

ir•ri•ga•tion watering crops by digging a ditch that leads from a body of water to a farm.

live•stock animals raised on a farm to eat or sell for profit.

man•u•fac•tur•ing making something from raw materials by hand or machinery.

min•er•al substance found below ground that is useful to humans, including ore, coal, natural gas, water, and gems.

North A•mer•i•ca one of seven continents in the world. Bounded by Alaska on the northwest, Greenland on the northeast, Florida on the southeast, and Mexico on the southwest.

peaks pointed tops of mountains.

pes•ti•cides chemicals used to kill pests, especially insects.

pla•teau a large, high plain.

pre•cip•i•ta•tion the deposit of rain, hail, snow, sleet, or mist on the Earth.

pre•serve protect from injury or ruin so more can be learned.

re•gion area of land with physical features and characteristics that sets it apart from other areas of land.

sage•brush an American plant that grows as a low shrub and has a bitter juice and a sharp smell.

sed•i•ment material that settles to the bottom.

tour•ism the business of providing services for people who are on vacation.

u•nique special; one of a kind.

wet•lands lands containing a lot of soil moisture.

yuc•ca a plant with sword-shaped leaves and clusters of white waxy flowers that grows in the warmer regions of North America.

ANSWERS



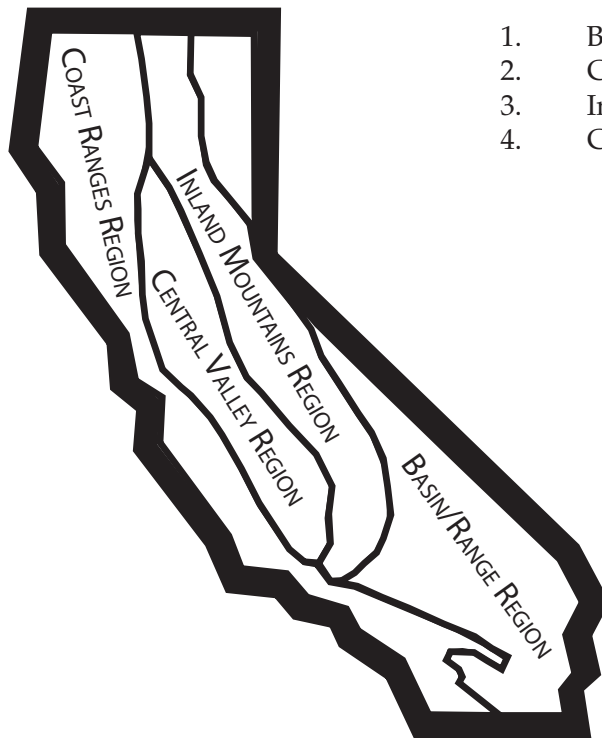
ANSWERS TO COMPREHENSION QUESTIONS

1. A
2. H
3. D
4. H
5. C
6. F
7. A

ANSWERS TO VOCABULARY QUIZ

- | | | |
|-------|--------|--------|
| 1. G | 11. O | 21. Y |
| 2. P | 12. AA | 22. BB |
| 3. R | 13. W | 23. B |
| 4. A | 14. S | 24. F |
| 5. T | 15. N | 25. I |
| 6. Q | 16. C | 26. K |
| 7. D | 17. V | 27. M |
| 8. X | 18. U | 28. L |
| 9. CC | 19. J | 29. DD |
| 10. H | 20. Z | 30. E |

ANSWERS TO CALIFORNIA REGIONS MAPPING PART I



ANSWERS TO CALIFORNIA REGIONS MAPPING PART II

1. Basin and Range Region; facts will vary
2. Central Valley Region; facts will vary
3. Inland Mountains Region; facts will vary
4. Coast Ranges Region; facts will vary